

Details_CVSAN 2316_Alexander Park Vecinity

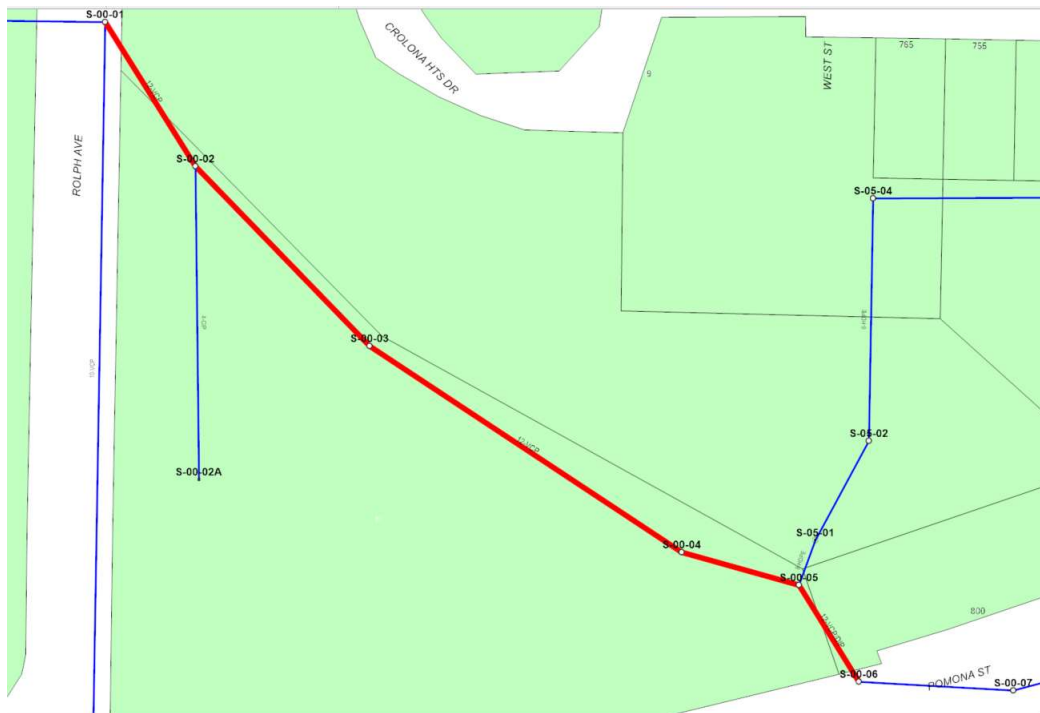
Approximately 763 LF of VCP to be replaced by Pip burst manhole to manhole from manhole known as S-00_01 thru manholes S-00-02, S-00-03, S-00-04, S-00-05 to S-00-06,

All lateral connections are to be restored (2 known).

Pipe from 0' to 25' immediately upstream from Manhole S-00-05 has a sag, open trench is required to remediate this condition.

The span between approximately 42 and 62 feet downstream from Manhole S-00-04 is a single 20 ft section of iron pipe. A sag at the downstream end of this pipe must be removed by open trench installation.

Replacement of decorative brick is not part of this job. Bricks are to be stacked nearby.



The Sewer pipe segments that make up the work are shown below:

Summary of Pipe Replacements			
segment	Approximate length	manhole	Depth of manhole
S-00-01		S-00-01	9'4"
S-00-01 to S-00-02	145	S-00-02	3'10"
S-00-02 to S-00-03	179	S-00-03	3'10"
S-00-03 to S-00-04	284	S-00-04	4'1"
S-00-04 to S-00-05	84	S-00-05	4'4"
S-00-05 to S-00-06	71	S-00-06	3'10"
TOTAL FOOTAGE:	763		

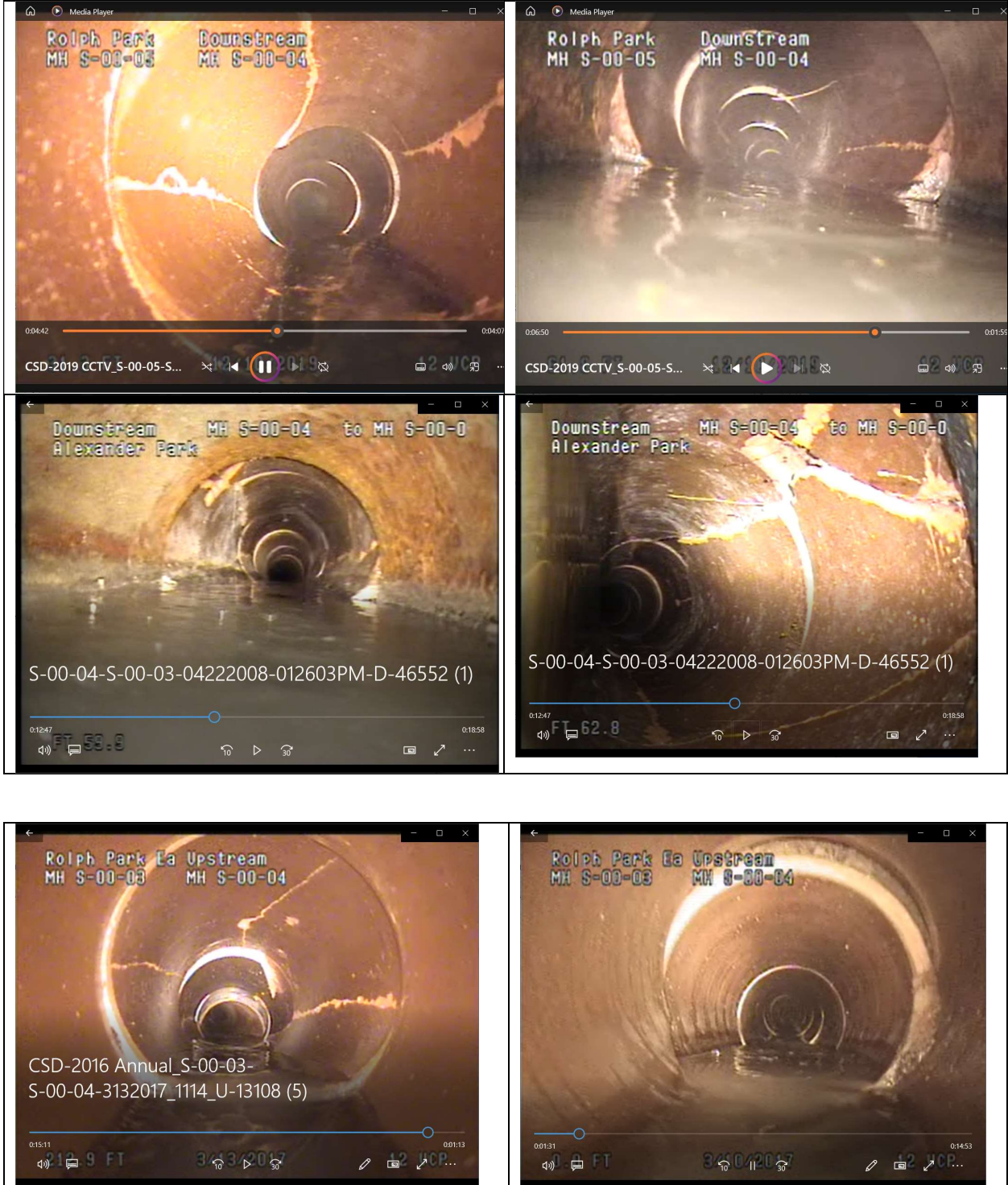
Alexander Park CCTV Photos



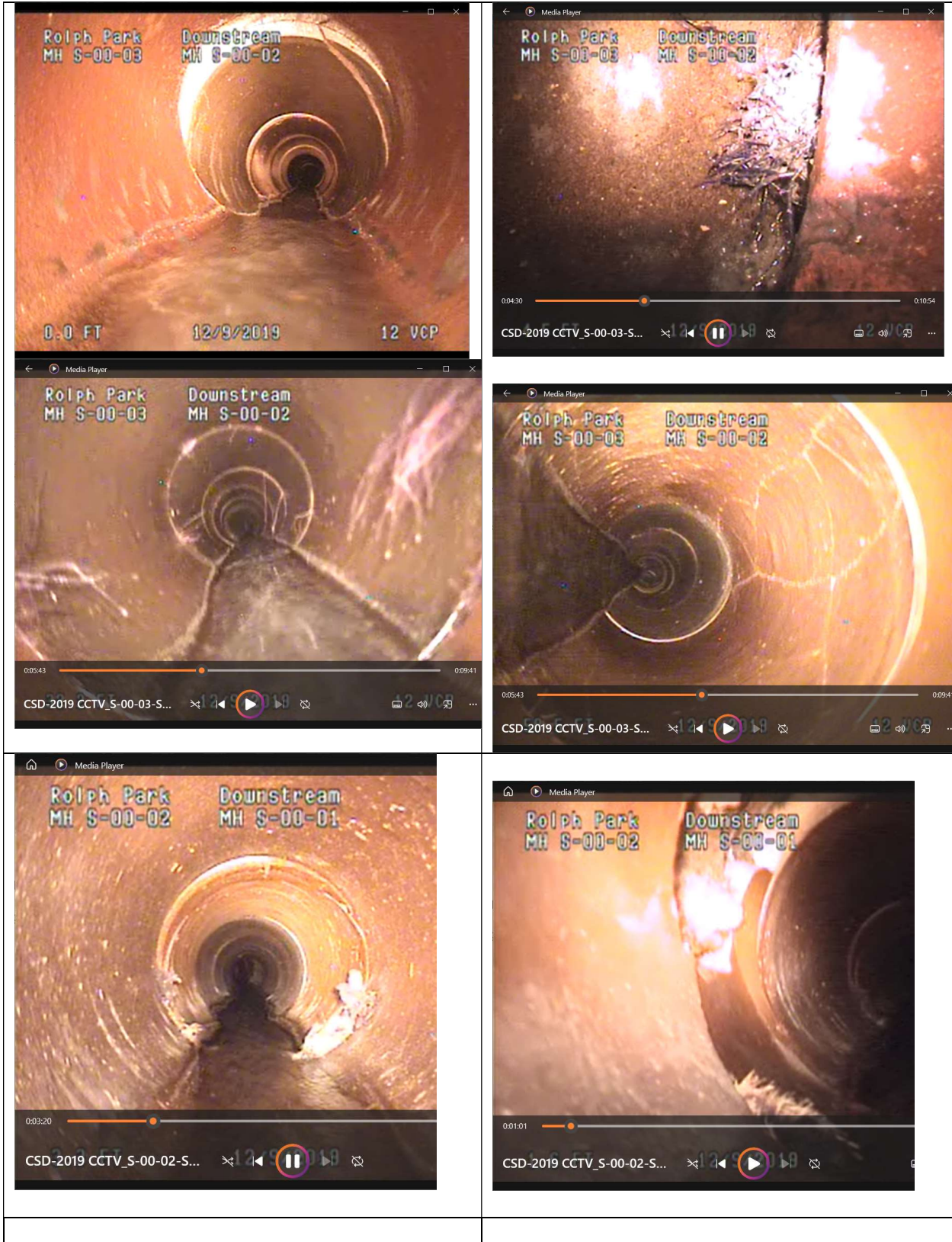
At 24' upstream from S-00-05, downslope offset, causes sag pool.
Above and left....at 38' downstream from SW-00-06, downslope offset –view of same offset and sag pool.



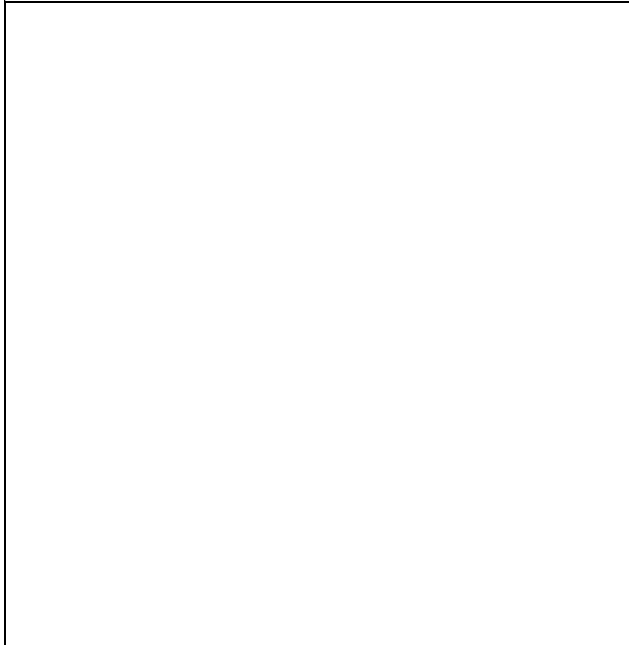
Alexander Park CCTV Photos



Alexander Park CCTV Photos



Alexander Park CCTV Photos



Alexander Park CCTV Photos

